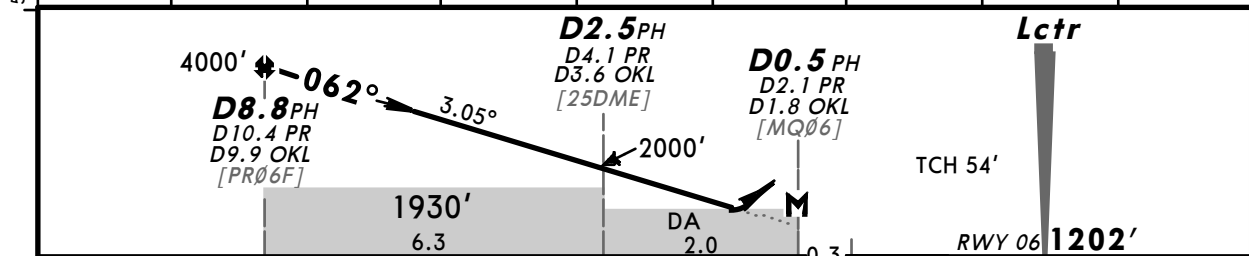
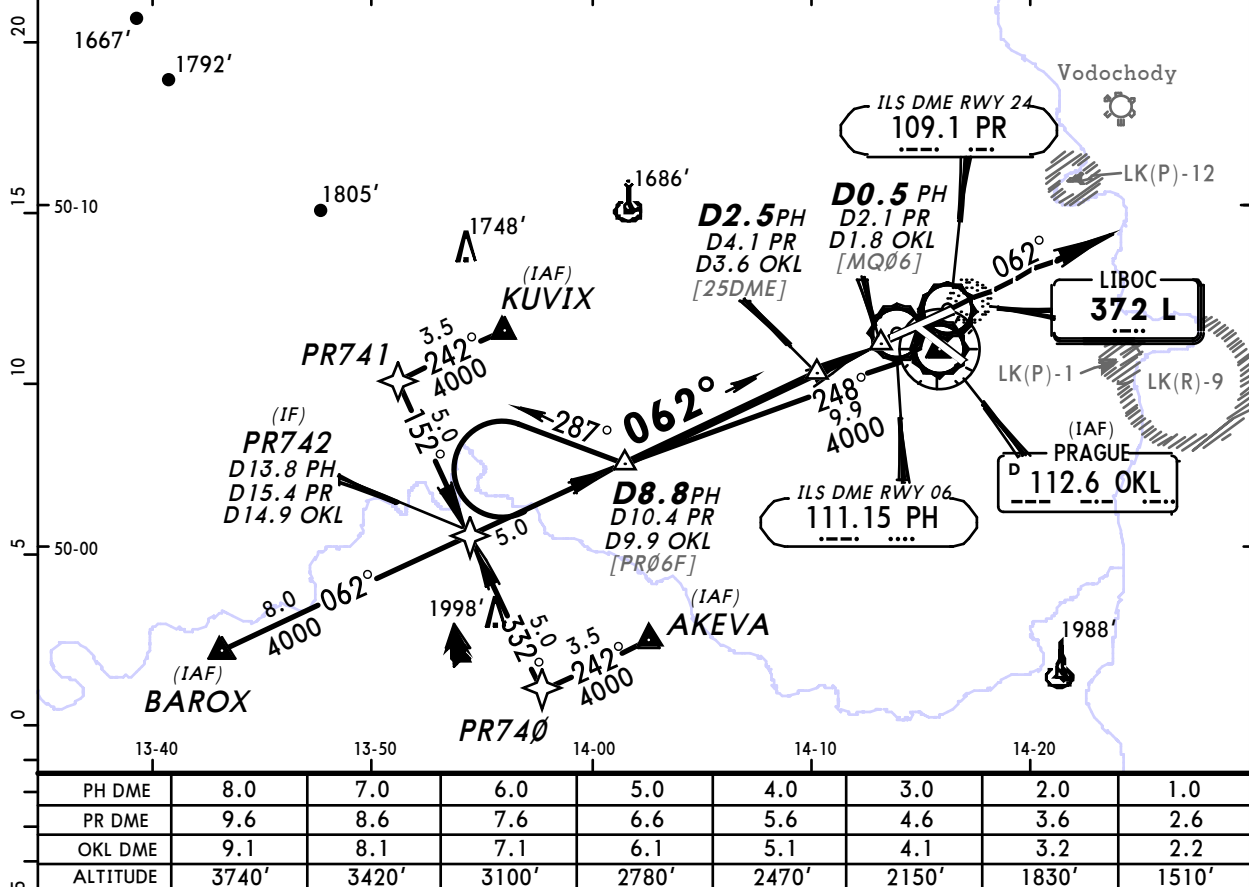


LKPR/PRG
RUZYNE

JEPPESSEN
20 APR 12 (16-1) Eff 3 May

PRAGUE, CZECH
NDB Rwy 06

ATIS	PRAGUE Radar (APP)	*RUZYNE Radar (APP)	RUZYNE Tower	*Ground
122.15	120.52 127.57	119.0	118.1	121.9
Lctr L 372	Final Apt Crs 062°	Procedure Alt D8.8 PH 4000' (2798')	DA(H) 1600' (398')	Apt Elev 1247' RWY 1202'
MISSED APCH: Climb on 062° to 4000'. Radar vectoring will be provided. MISSED APCH WITH COMM FAILURE: Climb on 062° to 4000'. At D10.0 OKL turn LEFT to VOR and climb to 5000'. Alt Set: hPa (MM on req) Rwy Elev: 43 hPa Trans level: By ATC Trans alt: 5000' 1. DME required. 2. Acft not equipped for P-RNAV expect radar vectoring after IAF KUVIX and AKEVA.				



Gnd speed-Kts	70	90	100	120	140	160	HIALS	4000'	on 062°
Descent Angle	3.05°	378	486	540	648	755	PAPI		
MAP at D0.5 PH/D2.1 PR/D1.8 OKL									

Standard		STRAIGHT-IN LANDING RWY 06		CIRCLE-TO-LAND	
		DA(H) 1600' (398')			
		ALS out		Max Kts	MDA(H) VIS
A	RVR 1400m	RVR 1500m		100	1650' (403') 1500m
B				135	1750' (503') 1600m
C		RVR 1800m		180	1850' (603') 1 2400m
D				D	NOT AUTHORIZED

Not authorized East of apt between extended RCL 06/24 & 12/30.

CHANGES: RWY 13/31 redesignated 12/30.

© JEPPESEN, 2000, 2012. ALL RIGHTS RESERVED.